

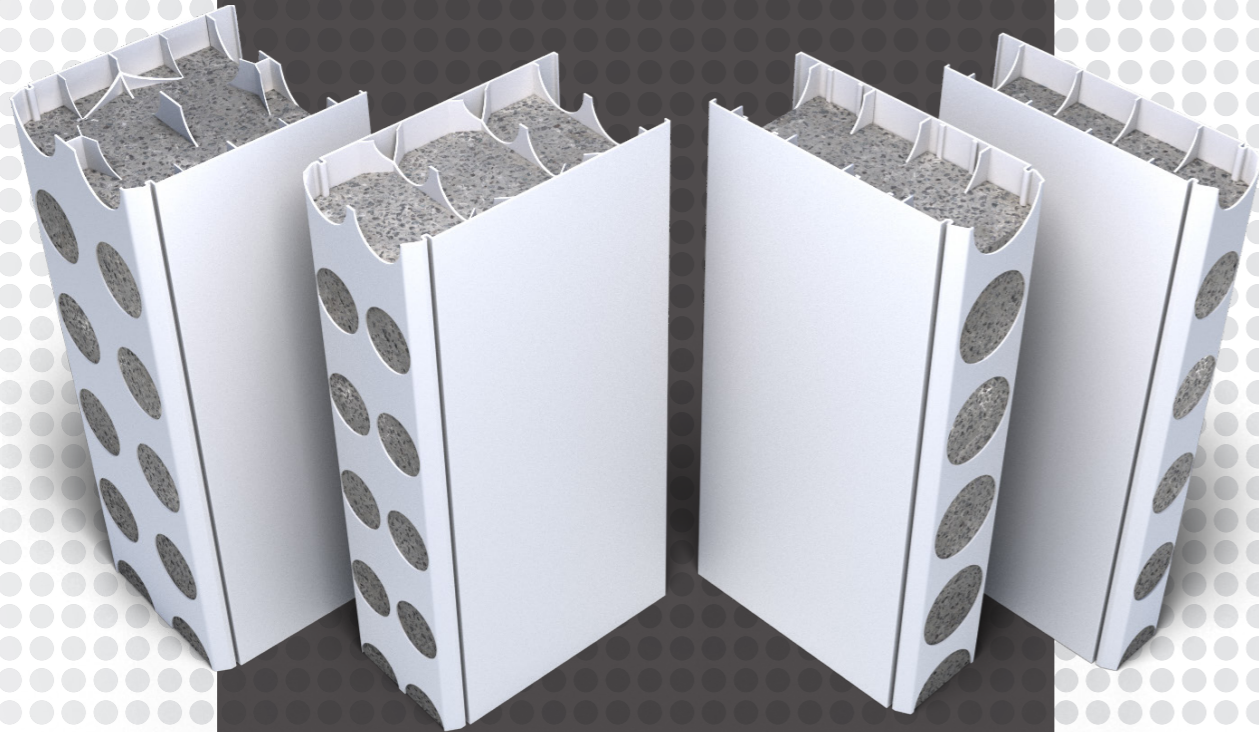


 **DINCEL**  
STRUCTURAL WALLING

# FINISHES

 **DINCEL**  
STRUCTURAL WALLING

 [www.dincel.com.au](http://www.dincel.com.au)  1300 DINCEL



**Australian  
Invented, Owned  
& Manufactured**

## **THE BCA COMPLIANT ALTERNATIVE TO TIMBER, STEEL, BLOCKWORK & BRICK CONSTRUCTION.**

There are many challenges facing the construction industry in Australia today. Outside of manpower, one of the largest is available product supply.

Traditional construction methods include blockwork, timber, steel and brick, all of which have seen lead times severely compromised. And we haven't even touched on material cost or labour availability.

Originating from the foundations of a structural engineering consultancy back in 1977, Dincel Structural Walling was developed to meet the demand and pace of today's building developments.

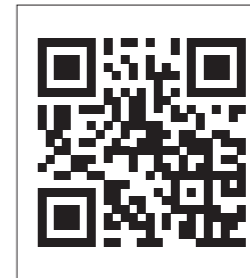
Dincel's unique and superior snap-lock joint connects the Dincel panel for fast, easy and lightweight manoeuvrability and installation.

Constructed at lower cost, in less time and with lower skill demand over traditional methods, Dincel Wall is suitable for most all above and below ground applications, load bearing or not - delivering a waterproof skin and fire compliant permanent polymer formwork solution with a comprehensive range of finishing options.

Best of all, supply is readily available and manufactured in Western Sydney with distribution centres across the Eastern seaboard.

Since the first profile rolled off the production line in 2006, Dincel Structural Walling solutions have been widely used across Australia, New Zealand and the Pacific Islands.

For more information visit our comprehensive website by scanning the following QR Code:





 **DINCEL**  
STRUCTURAL WALLING

# NATURAL

Lending itself to a polished look showcasing a wave deflection in its natural form, Dincel Structural Walling is a clean and maintenance free solution, with an off-white colour palette.

Our natural finish is suitable for both internal and external use, where the functionality of a bare wall takes precedence over finished aesthetics. Typical applications include basements, stair wells, lift shafts, party walls and retaining walls.



 **DINCEL**  
STRUCTURAL WALLING

# PAINT

Dincel wall can effortlessly be finished with a direct paint application using a PVC compatible paint system. Typically most paint systems consist of a primer and top coat which are both applied by roller or spray.

Where aesthetics take precedence, use a textured or stencil paint to hide panel joints.



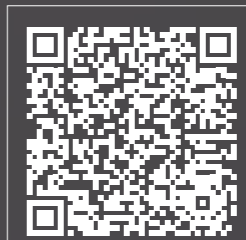
 **DINCEL**  
STRUCTURAL WALLING

# RENDER

As a non-porous substrate the Dincel wall surface excels with rendering over conventional building materials such as fibre-cement, brick, block and concrete.

The Dincel wall skin ensures no shrinkage cracks within the concrete infill carry through to the external render.

For more information on which renders will not delaminate on Dincel wall scan the following QR Code:





 **DINCEL**  
STRUCTURAL WALLING

# CLAD

Stone, wood, brick, panel, sheet and tile - the wide range of cladding options available will bring your Dincel wall aesthetic requirements to life. Effortlessly.

Check that your chosen material is compliant with NCC fire requirements.